

NEMESIS INDUSTRIES

Triumph/Odyssey Front Bumper

Thank you for purchasing one of our quality products. From product conception to the moment we packaged it, our focus has been on providing you with the very best. A great deal of effort is spent ensuring you receive a quality part that will hold up to years of abuse. For any reason you are unsatisfied with anything purchased from Nemesis Industries, it may be returned within 10 days in unused condition for your choice of an exchange or a full refund, less shipping charges. Thank you for your purchase and we hope to see you on the trail soon.

Pre-Install Notes:

- **Before you start it is imperative that you read these instructions. Failure to do so may result in an unsatisfactory installation or personal injury.**
- It is the purchasers / installers responsibility to inspect the package for any missing or damaged pieces prior to beginning installation. If any discrepancies are discovered please contact us immediately so we may rectify the situation.
- Carefully read the Product Warranty and Assumption of Risk Agreement at the end of this document.
- This document is also available on our website in .pdf format with images that can be enlarged for greater clarity www.nem-ind.com/tech
- Your personal safety is of the utmost importance. Please, exercise caution when working around and under your vehicle.
- Wear personal protective equipment such as safety glasses, hearing protection and gloves when working on your vehicle.

Installation Instructions

NEMESIS
INDUSTRIES



Box Contents:

Bumper Skin
Shackle Mount x 2
Fairlead Adapter
Winch plate
Fog Light Mount x 2 (Fog light equipped bumpers only)



Hardware Pack Contents:

Part	Size	Length	Quantity
Machine Screw	10-24	1.5"	8
Flat Washer (Zinc)	#10		
Nylock Nut (Steel)	10-24		
Flat Head (SS)	1/4"		
Button Head (SS)	1/4"		
SAE Flat Washers	1/4"		
Nylock Nut (Steel)	1/4"		
Flathead (SS)	3/8"		
Hex Head GR 5 (Zinc)	3/8"		
SAE Flat Washer (Zinc)	3/8"		
Lock Washers (Zinc)	3/8"		
Extruded U-Nut	3/8"		
Wheel Stud	1/2"-20		
Nylock Nut Gr 5 Fine (Zinc)	1/2"-20		
SAE Flat Washer (Zinc)	1/2"		



Tools Required:

3/8" Drive Ratchet	1/4" Drill Bit
3/8" Drive 18mm Socket	Countersink Bit (Recommended)
3/8" Drive 3/4" Socket	Grinder with a Cut Off Wheel or Recip. Saw
3/8" Drive 4" Extension	Grinder
3/4" Open-end Wrench	Pliers or Fur Tree Pliers
1/2" Open-end Wrench	Hammer
7/32" Hex Key	Center Punch
3/16" Hex Key	Small Flat Tipped Screwdriver
Drill	Blue Painters Tape (Optional)
1/2" Drill Bit	Black Semi-Gloss Spray Paint (Optional)

Fog Light Equipped Bumpers Only

Small Philips Head Screwdriver	Wire Cutter
11/32" Open-end Wrench or Socket	Insulated Terminal Crimper
Wire Stripper	Heat Gun



Precautions:

1. Make sure the vehicle is in park or first gear with the parking brake set. Vehicle should be on a level, sturdy surface and properly secured to prevent movement while working on it. We recommend using wheel chocks or blocks to ensure the vehicle does not move during the installation process.
2. If lifting of the vehicle is required please consult the vehicle owner's manual for proper lifting techniques and jack placement. Use jack stands to support the vehicle when working under it.
3. Always wear appropriate personal protective equipment: gloves, hearing, and eye protection at a minimum.
4. Use caution when lifting components into place, make sure components are secured during installation.
5. If drilling is required eye protection is especially important to avoid injury. Also be sure to thoroughly inspect the area around where you are drilling to avoid damaging wiring or other components.
6. Use extreme caution when cutting or trimming is required.
7. Please follow the recommended specifications for torque on all hardware. We recommend checking the torque during regular routine maintenance on all aftermarket accessories.
8. Use caution when routing electrical cables and lines. Avoid moving parts, components that become hot and rough or sharp edges.
9. Always insulate and protect all exposed wiring and electrical terminals.
10. Disconnect the battery cables from both terminals with caution, and ensure that they do not touch.



Install Procedure:

Factory Front Bumper Removal

1. Remove the four (4) dart clips from underside of OEM bumper that hold the plastic wind deflector to the bumper.
Tools: Small flat tipped screwdriver
2. Remove the two (2) dart clips from back side of plastic skid plate that hold it to the factory cross member.
Tools: Small flat tipped screwdriver
3. If your Jeep is equipped with factory fog lights disconnect the wiring harness from the back of the fog lights.
4. Remove the eight (8) nuts from bumper studs.
Tools: 3/8" ratchet, 3/8" drive 18mm socket
5. Carefully slide the bumper forward to allow access to the fog light wiring harness. Remove the fir trees holding the harness to the bumper.
Tools: Pliers or fur tree remover
6. Remove the factory bumper and set aside.
7. Remove the two dart clips from the top bumper trim plastic.
Tools: Philips head screwdriver
Tip: Do not press down on the screwdriver it will strip out the plastic threads and make it difficult to remove the clip.
8. Clean off any road debris from the frame and frame horns.



Install Nemesis Bumper

1. Remove wiring harness from the cross member and the cross member risers.
Tools: Pliers or fur tree tool
Tip: Do not cut the zip ties holding the fur trees new mounts are provided for them.
2. On 2012+ vehicles a portion of the vacuum pump mount needs to be removed from the frame.
Tools: Grinder with a cut off wheel
Tip: Once tabs are removed paint exposed metal to avoid rust.





3. Install clip nuts on to the top of the winch plate.
HDW: 6 – 5/16" extruded u-nuts (Short)



4. Place the winch plate onto cross member and frame horns.

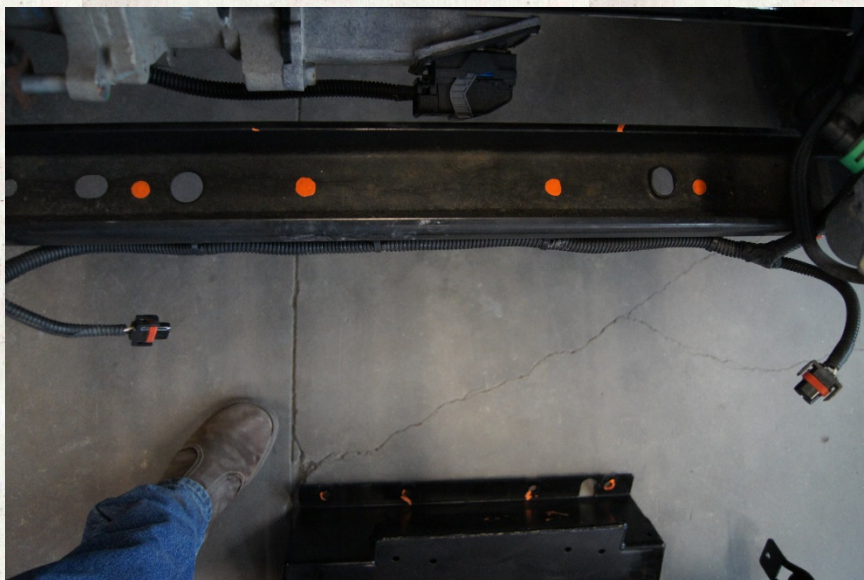
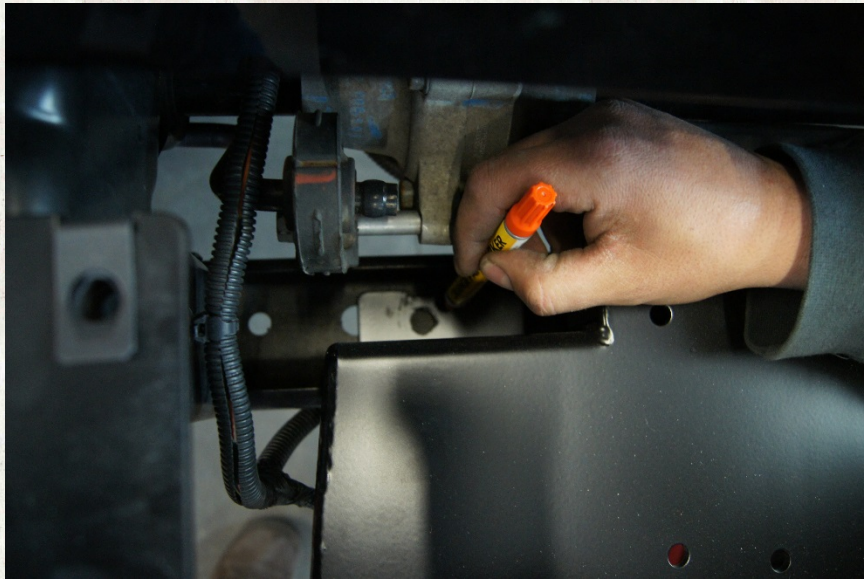




5. Mark the center of the five (4) holes on the winch plate that sits on the cross member.

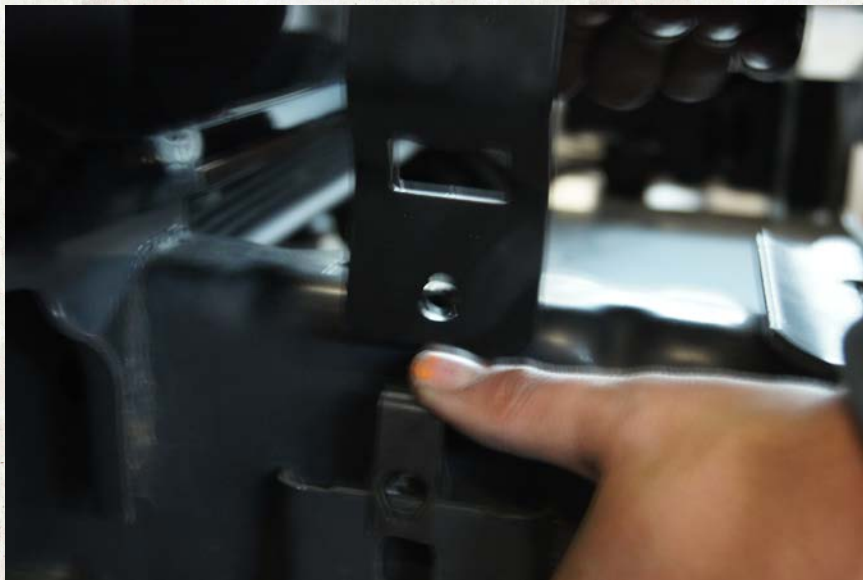
Tools: Paint pen, hammer, center punch

Tip: Make sure winch plate is centered and flat on the frame horns before marking holes.





6. Remove the winch plate and drill the five (4) marked holes to a 1/2" diameter.
Tools: Drill, 1/4" drill bit, 1/2" drill bit
Tip: Start with the 1/4" drill bit and step up in size to enlarge the hole. Following this procedure will keep the bit from wandering.
7. Deburr the five (4) holes you drilled in step 7.
Tools: Drill, countersink drill bit
Tip: Use black paint to keep the bare metal from rusting.
8. Install 3/8" extruded u-nuts onto the winch plate.
HDW: 4 – 3/8" extruded u-nuts (short)
Tip: The threaded portion of the extruded u-nut should be facing up.
9. Install two (2) 3/8" extruded u nuts onto outside of each side of the frame.





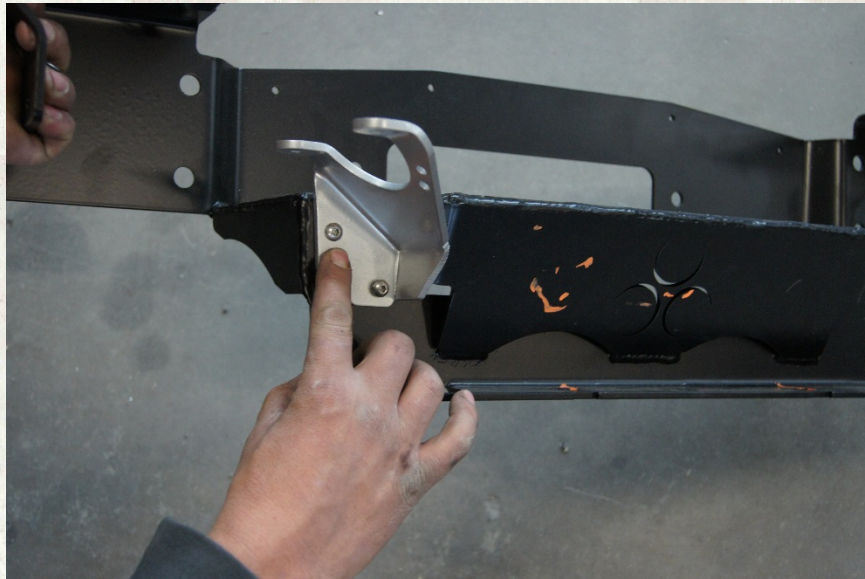
10. On 2012+ vehicles attach the vacuum pump mount to the winch plate.

HDW: 2 – 1/4" x 1" Button head bolts GR8 hex head bolts

2 – 1/4" nylock nuts

Tools: 7/16" open end wrench

5/32" hex key



11. Install the wheel studs into the shackle mount.

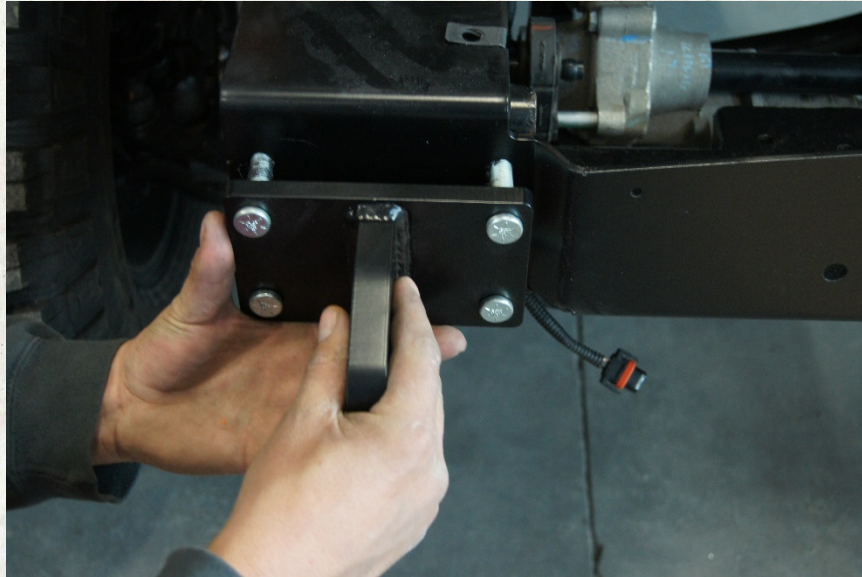
Tools: Hammer or press

HDW: 8 – 1/2" x 20 wheel studs

Tip: Studs need to be installed from the front to the back, with the shank of the stud extending in the opposite direction as the shackle mount.



12. Install the winch plate onto the frame horns using the shackle mounts.
Tip: Make sure the wiring harness is to the back of the winch mount.



13. Install the shackle mounts onto the frame horns.
HDW: 8 – 1/2" fine thread lock nuts
Note: **Do not tighten the nuts.**





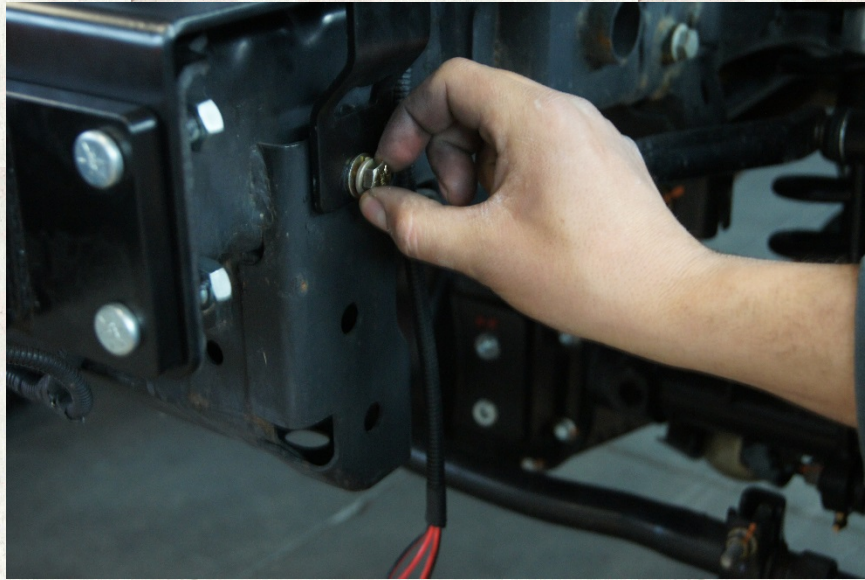
14. Install two (2) 3/8" x 1" hex head bolts into winch plate support tabs.

HDW: 2 – 3/8" x 1" hex head bolts

2 – 3/8" lock washers

2- 3/8" flat washers

Tip: Do not tighten.



15. Install four (4) 3/8" x 1" hex head bolts through the cross member into the winch plate.

HDW: 4 – 3/8" x 1" hex head bolts

4 – 3/8" lock washers

4- 3/8" flat washers

Tip: Do not tighten.

16. Center the winch mount between the frame horns and tighten all eight (8) 1/2" lock nuts that attach the shackle mounts and winch plate to the frame horn.

Tools: 3/8" ratchet, 3/8" drive 3/4" socket, 3/4" open end wrench

Tip: Double check to make sure that the shackle mounts are square to the winch mount and the winch mount is square to the frame horns.

Note: Tighten nuts to **90 ft./lbs.** of torque.



17. Tighten the four (4) 3/8" x 1" hex head bolts between the crossmember and the winch plate.
Tools: 3/8" ratchet, 3/8" drive 9/16" socket
18. Tighten the two (2) 3/8" x 1" hex head bolts on the winch plate support tabs.
Tools: 3/8" ratchet, 3/8" drive 9/16" socket
19. If you are installing a winch into the bumper do so at this time.
Tip: There are two (2) sets of holes provided in the winch mount. One set is for a centered drum and the other is for an offset drum. Be sure to choose the hole pattern that fits your winch.
Note: **Follow the installation instructions provided with your winch.**
20. Tighten the four (4) compression nuts on the outside of the frame rails.
Tools: 3/8" ratchet, 3/8" drive 3/4" ratchet
21. If you are installing a bumper that does not mount factory fog lights skip to step 29.
22. If you are installing a bumper that does provide mounts for the factory fog lights you will need to extend the factory harness by 6".
23. Cut the wiring for the factory fog light connector 4" back from the plug that goes to the fog light.
Tools: Wire cutter
24. Strip the cut ends of the factory harness and the new lengths of wire.
Tools: Wire striper
HDW: 2 - 6" lengths of 16 ga. automotive wire
25. Attach insulated butt connectors onto the factory harness and one end of the new wires.
Tools: Insulated terminal crimpers
HDW: 4 insulated butt connectors
26. Attach new section of wire to the factory harness and plug.
Tools: Insulated terminal crimpers
27. Heat shrink the insulated terminals onto the new wire harness.
Tools: Heat gun
28. Cover new section of wire with loom.
HDW: 1 - 6" length of plastic loom
TIP: Use electrical tape to keep the new section of loom from falling off.



29. Attach the fairlead adapter to the skin using only the 4 lower holes.
HDW: 4 – ¼" x 20 flat head bolts
4 – ¼" lock nuts
30. Slide the aluminum skin over the outside of the completed winch mount assembly.
31. If you have purchased a light mount follow the install instructions for those parts at this time if not continue to step 33.
32. Install the remaining four (4) ¼" flat head bolts from the fairlead adapter through the winch plate. .
HDW: 4 – ¼" x 20 flat head bolts
4 – ¼" lock nuts
Note: **Do not tighten hardware.**
33. Install the fairlead supplied with the winch.
Note: **Do not tighten hardware.**
34. Install the six (6) 5/16" flat head bolts from the top of the bumper skin into the clip nuts installed on the winch plate.
HDW: 6 – 3/8" x 1.5" flat head bolts
Note: **Do not tighten hardware.**
35. Install the two (2) 3/8" flat heads from the bottom of the skin into the cross member.
HDW: 2 - 3/8" x 1.5" SS flat head bolts
2 – 3/8" lock nuts
2-3/8" flat washers
36. Tighten the four (4) 1/4" flat head bolts installed in step 32.
Tools: 5/32" hex key, 7/16" open end wrench
Note: Tighten bolts to **10 ft./lbs.** of torque.
37. Tighten the six (6) 3/8" flat head bolts installed in step 34.
Tools: 7/32" hex key
Note: Tighten bolts to **15 ft./lbs.** of torque.
38. Tighten the two (2) 3/8" flat head bolts installed in step 35.
Tools: 7/32" hex key
Note: Tighten bolts to **25 ft./lbs.** of torque.



39. If you installed a fairlead tighten the bolts holding it in place.

Note: Refer to the installation instructions included with the winch for proper torque on these bolts.

If you are installing a bumper that does provide mounts for the factory fog lights mounts proceed to step 40 otherwise proceed to step 42.

40. Mount the fog lights into the fog light mount, and tighten.

HDW: 8 - 10-24 x 1.5" pan head screws

8 - 10-24 nylock nuts

41. Mount fog light assembly into bumper and tighten.

HDW: 2 - ¼" x 1" flat head bolts

2 - ¼" nylock nuts

Tools: 5/32" hex key, 7/16" open end wrench

Note: Tighten bolts to **10 ft./lbs.** of torque.

Be sure to center fog light in cutout.

42. Reconnect battery cables.

Congratulations! Your JK now has a new level of protection!

Thank you for your purchase. If you have any questions or comments about these instructions please contact us at:

303-974-2440

info@nem-ind.com



Troubleshooting:

1. Please check our technical support page for additional resources pertaining to the install of this product.



Warranty:

The goal of all of us at Nemesis Industries, Inc.™ is to ensure you are delighted not only with this purchase, but also with any additional purchases and to that end Nemesis offers a ten (10) day from the ship date no questions asked return policy if products are returned in an "unused" condition, this excludes custom parts or parts with custom paint or powdercoat. In addition, Nemesis warrants your product for two (2) years from the date of sale to be free from defects in material and workmanship under normal installation and use. This warranty is limited to the costs of repair and replacement. Therefore, no type of labor or shipping allowance is available in connection with a customer's repair, removal, reinstallation or return of a damaged product. Should any questions arise, please call Nemesis at (303) 974-2440. We remind you that all finishes, painted or powder coated, must be cleaned and waxed regularly and the portion of the warranty concerning the products' finish does not apply to products that have been chipped, scratched or damaged in any way. All warranty claims are subject to inspection by Nemesis. Following such inspection, the product in question may either be repaired or replaced when found defective. Prior to any replacement or repair, written authorization as to the action to be taken shall be issued by Nemesis. Failure to contact Nemesis prior to having warranty work performed shall immediately void all applicable warranties.

THE WARRANTY EXPRESSED ABOVE IS THE SOLE WARRANTY OF NEMESIS AND ANY OTHER EXPRESSED OR IMPLIED WARRANTIES ARE HEREBY SPECIFICALLY EXCLUDED AND DISCLAIMED, INCLUDING, BUT NOT LIMITED TO, THE IMPLIED WARRANTIES OF MERCHANTABILITY AND FITNESS FOR A PARTICULAR PURPOSE. EXCEPT FOR THE LIMITED WARRANTY DESCRIBED HEREIN, NEMESIS SHALL NOT BE LIABLE TO ANYONE FOR INCIDENTAL, CONSEQUENTIAL, PUNITIVE, SPECIAL OR EXEMPLARY DAMAGES OR OTHER DIRECT OR INDIRECT DAMAGES OF ANY TYPE OR KIND ARISING FROM ANY BREACH OF WARRANTY ARISING FROM OR IN CONNECTION WITH THE PURCHASE OF NEMESIS PRODUCTS.

Assumption of Risk, Indemnity and Release:



Customer's Acknowledgments. Customer understands and acknowledges that products purchased from Nemesis Industries, Inc.TM ("Nemesis") are designed to protect against certain types of property damage from minor impacts, but are not designed as a crash safety device, or as an impact resistant product designed for the protection of occupants, but instead are cosmetic enhancements to assist in protecting against minor impact damage with certain stationary obstacles. As a result, Customer also understands and acknowledges that the installation of Nemesis products on a Vehicle and the voluntary use of that Vehicle for off-road activities (each, hereinafter, and "an Off-Road Activity") is inherently dangerous and hazardous and can result in damage to the Vehicle, to others, to the property of others and in the serious bodily injury or death to Customer or others.

Use in an Off-Road Activity. By accepting a Nemesis product and using such product in any Off-Road Activity, Customer accepts and agrees to all of the terms described below (the "Release"); provided that Customer may in lieu of accepting the terms of this Release and prior to installation, elect to return any Nemesis product and receive a full refund. Such return may be initiated by contacting a Nemesis sales representative or by directly contacting Nemesis at (303) 974-2440 or at www.nem-ind.com for the issuance of a call tag for the product in question. Once the product being returned has been received by Nemesis in good condition, a full refund will be issued minus shipping charges.

Assumption of Risk and Release. Customer assumes all risk and responsibility of engaging in an Off-Road Activity which is acknowledged as being inherently dangerous. Customer understands that persons participating in an Off-Road Activity must possess specialized knowledge and skills, and in voluntarily deciding to do so, Customer assumes all risks inherent therein which may be encountered at any time in connection with an Off-Road Activity. With full knowledge of the above and all risks inherent therein, Customer and others who may voluntarily choose to engage in an Off-Road Activity accepts full responsibility for and assumes all risks associated with engaging in an Off-Road Activity, whether known, unknown, or inherent, and acknowledge and agree that such persons are assuming all responsibility for any and all consequences resulting from the participation in an Off-Road Activity, including, but not limited to, injury and/or death to Customer or others and damage to the Vehicle and other property. Customer and each other participant in any Off-Road Activity hereby release, and forever discharge and shall hold harmless each other and Nemesis, including all of their respective predecessors, affiliates, successors, assigns, partners, venturers, principals, officers, directors, managers, shareholders, attorneys and agents and their respective insurance carriers (the "Released Parties") and hereby release and forever discharge, indemnify and hold harmless the Released Parties, and any and all persons claiming under them, however involved, of and from any and all liability for any and all claims, demands, damages and costs, liabilities, losses, expenses, obligations, compensations, reimbursements, actions, rights, loss of profits, and rights and causes of action, of every kind and nature whatsoever, including court costs and attorney fees, whether known or unknown, which Customer and any other participant may now have, or claim at any future time to have, arising from or growing out of, or by reason of, or based in whole or in part upon, any act, omission, event, transaction, matter or thing involved, alleged or referred to, whether direct or indirect, involving an Off-Road Activity.

Release of Unknown Claims. Customer and any other participant fully realize that in participating in an Off-Road Activity they may sustain unknown and unforeseen losses, costs, expenses, damages, liabilities, and claims, and the consequences thereof, which may be at this time, and hereafter unknown, unrecognized and not contemplated by them. By participating in an Off-Road Activity, Customer and any other participant intend to release the Released Parties from any and all liability for any and all such unknown and unforeseen losses, expenses, damages, costs, liabilities, and the consequences thereof, not known, recognized nor contemplated at any time by them, which result or may result from an Off-Road Activity. Customer and any other participant expressly and forever waive any right to assert that this Release was the result of a mistake of any kind, waiving all claims based upon the doctrine of mistake.

Covenant Not to Sue. Customer and any other participant specifically covenant and agree, each with the other, never to institute or participate in any suit or action, including class actions, at law or in equity, whether sounding in tort or contract, against the Released Parties and all persons claiming under them or any of them by reason of any claim, demand, action, or cause of action described in this Release.



Miscellaneous Provisions. This Release shall be binding in all respects upon, and shall inure to the benefit of the Released Parties and their heirs, successors and assigns. This Release shall be governed by the laws of the State of Colorado, and the sole and exclusive jurisdiction for the determination of any controversy or claim arising out of the purchase of any Nemesis product shall be in the District Court of Arapahoe County, Colorado. In the event that a court of competent jurisdiction enters judgment declaring any material provision of this Release invalid or unenforceable, the remainder of this Release shall remain in full force and effect and such provision shall be limited or eliminated to the minimum extent necessary so that such invalid or unenforceable provision shall otherwise remain in force or effect. Neither Customer nor any other participant shall be entitled to any favorable construction of any provision of this Release because the Release was drafted by Nemesis or by an attorney for Nemesis. The acceptance of a Nemesis product constitutes Customer's voluntary acceptance of this Release, Customer's acknowledgement that no oral statements or inducements have been made and that full and adequate consideration has been received for this Release.

Nemesis Industries, Inc.
2820 South Zuni Street Englewood, Colorado 80110
Phone: 303-974-2440
Fax: 303-952-5212
www.nem-ind.com