



DARE TO ADVENTURE

33990 CR-27
Kiowa, Co 80117

T: 303-974-2440
F: 303-953-5212

www.nem-ind.com

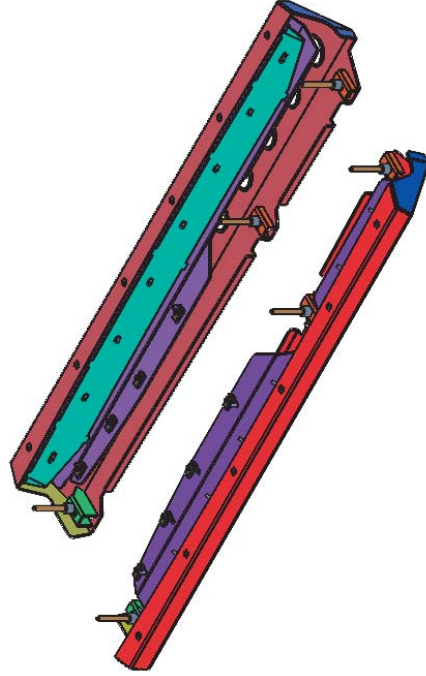


INSTALLATION INSTRUCTIONS

Part Number

137300

**JK 4 Door
"Billy Rockers"**



Box Contents:

Hardware Kit(s)



13730-92



13730-91



13730-94



13730-93



13730-12 (x6)

Hardware List:

Nemesis Kit Part # 137300-01

Part Description	Size	Length	Quantity	Part #
Flat Head (SS)	3/8"-16	1"	24	73931
Extruded U-Nut	3/8"	Long	32	0162856
Hex Head GR 5 (Zinc)	3/8"-16	1.25"	8	13107
USS Flat Washers (Zinc) 3/8"	N/A	N/A	8	33008
Lock Washers (Zinc) 3/8"	N/A	N/A	8	33622
Hex Head GR 5 (Zinc) 1/4"-20	1/4"-20	1.25"	16	13007
Extra Thick Washers 1/4"	N/A	N/A	16	11101302
Lock Washers (Zinc) 1/4"	N/A	N/A	16	33618
Hex Head GR 10.9	M12x1.75	140mm	6	11114428
Extra Thick Washers M12	N/A	N/A	6	1101305
Lock Washers Hi Alloy M12	N/A	N/A	6	33895
Rubber Door Strip	N/A	68"	2	10158-04967

Pre-Install Notes:

Before you start it is imperative that you read these instructions carefully. Failure to do so may result in damage to your vehicle, unsatisfactory installation, or personal injury.

1. Your personal safety is of the utmost importance. Please, exercise extreme caution when working around and under your vehicle.
2. Wear personal protective equipment such as safety glasses, hearing protection and gloves when working on your vehicle.
3. Carefully read the Product Warranty and Assumption of Risk Agreement at the end of this document.
4. It is the purchasers/installers responsibility to inspect the package for any missing or damaged pieces prior to beginning installation. If any discrepancies are discovered please contact us immediately so we may rectify the situation.
5. This document is also available on our website in .pdf format with high resolution images that can be enlarged for greater clarity. www.nem-ind.com/tech
6. Any reference to Drivers or Passenger sides are based on a left hand drive vehicle.

Precautions:

1. Make sure the vehicle is in park or first gear with the parking brake set. Vehicle should be on a level, sturdy surface and properly secured to prevent movement while working on it. We recommend using wheel chocks or blocks to ensure the vehicle does not move during the installation process.
2. If lifting of the vehicle is required please consult the vehicle owner's manual for proper lifting techniques and jack placement. Use jack stands to support the vehicle when working under it.
3. Always wear appropriate personal protective equipment: gloves, hearing, and eye protection at a minimum.
4. Use caution when lifting components into place, make sure components are secured during installation.
5. If drilling is required, eye protection is, especially important to avoid injury. Also be sure to thoroughly inspect the area around where you are drilling to avoid damaging wiring or other components.
6. Use extreme caution when cutting or trimming is required.
7. Please follow the recommended specifications for torque on all hardware. We recommend checking the torque during regular routine maintenance on all aftermarket accessories.
8. Use caution when routing electrical cables and lines. Avoid moving parts, components that become hot and rough or sharp edges.
9. Always insulate and protect all exposed wiring and electrical terminals.
10. Disconnect the battery cables from both terminals with caution, and ensure that they do not touch.
11. When installing hardware use anti-seize or brake caliper grease to minimize the risk of damaging threads and allow for easy removal at a later time.
12. When making electrical connections use dielectric grease to avoid damage from moisture and ensure a long lasting connection.

Required Tools:

- 3/8" Drive Ratchet
- 3/8" Drive 7/16" Socket
- 3/8" Drive 9/16" Socket
- 3/8" Drive 18mm Socket
- 3/8" Drive 19mm Socket
- Drill
- 1/4" Drill Bit
- 3/8" Drill Bit
- 5/8" Drill Bit
- Countersink Bit or Small File
- 5/32" Hex Key
- 7/32" Hex Key
- Small Screwdriver
- Hammer
- Center Punch
- Paint Pen/Marker
- Anti-Seize or Brake Caliper Grease

Suggested Tools:

Suggested tools are items we use in the shop when completing an install to make the job easier. By no means are you required to use/purchase these tools as they may be expensive or difficult to find.

- 1/4"-20 Tap
- Ratchet Adapter for 1/4" Tap
- Snap Punch
- Step Bit that goes up to 5/8" or larger

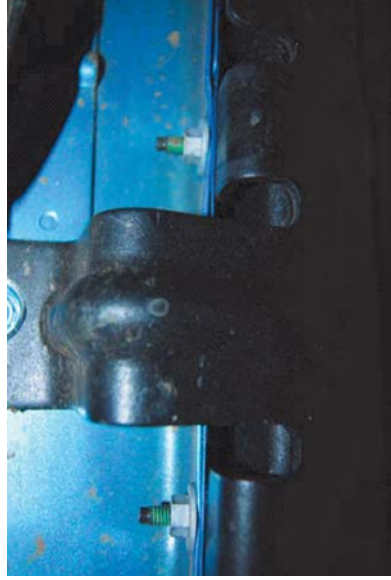
Install Procedure:

Please follow these instructions only, if you are having difficulty with a particular step or a part is not fitting as described STOP and contact us before proceeding. Taking actions outside of these instructions can result in damage to your vehicle.

Remove factory side steps or rock rails (if equipped).

1. Remove the nuts that hold the step/rail to the pinch seam on the body of the Jeep.

Tools: 10mm open end wrench



2. Remove the bolts holding the step/rail to the underside of the tub.

Tools: 3/8" ratchet, 3/8" drive 13mm socket

Tip: Have someone hold the step/rail as you remove the bolts to keep it from falling on you. If an extra person is not available, keep 2 of the small nuts loose on the bolts that go through the pinch seam while removing the remaining bolts.

3. Remove step and set aside.

Tip: Save the three (3) 8mm x 1.25 bolts that came out of the bottom holes, they can be reused to help with alignment later.



Install or loosen Titan Tub Armor

1. Complete the Titan Tub Armor install before beginning the Billy Rocker install.

Tip: Titan Tub Armor Instructions can be found on our website in the technical area.

2. If you have purchased and installed the Titan Tub Armor previous to the Billy Rocker you will need to remove the 8 flat head bolts from below the bend on the tub armor and loosen the top 4 or 5 flat head bolts.

Tools: 5/32" Hex Key

Tip: The 8 flat heads below the return will not be re-used.



Install Procedure:

Continued

Install Billy Rocker

1. On 2007 to early 2012 Jeeps, you will need to remove the two (2) forward most factory clip nuts from the body beam on the bottom side of the tub and replace them with supplied 3/8" extruded clip nuts.

HDW: (2) - 3/8" extruded clip nuts

Tools: Small screwdriver

Note: This only applies to Jeeps that came from the factory with some sort of running board or rock slider. Depending on vehicle year clip nut style can vary from what is pictured.



2. 2007- Early 2012 Jeeps: Use two (2) 3/8" bolts with a flat washer to attach the space frame to the tub using the 3/8" clip nuts installed in step 2. Mid 2012 Jeeps and up will need to reuse the factory hardware to locate the space frame.

HDW: (2) - 3/8" x 1.25" hex head bolts
(2) - 3/8" flat washers
Or
(2) - Factory M8 x 1.25 bolts

Tip: Leave the bolts loose. This will allow for movement which will assist in aligning the 1/4" hardware in the next step. Use anti-seize or brake caliper grease on bolts to make assembly easier.

3. On mid-year 2012 and up Jeeps the threads are molded into the bottom side of the tub. You will reuse the factory bolts along with two new 3/8" clip nuts to mount the space frame. This only applies to Jeeps that came from the factory with some sort of running board or rock slider.

Note: The molded threads are metric. (M8 x 1.25) On Jeeps without factory running boards or rock rails the holes will be covered with a square piece of adhesive packed paper.



Before



After

Install Procedure: Continued

- Use three (3) 1/4" bolts to hold the space frame in place to allow marking of the two additional holes on the bottom of the tub.

HDW: (3) - 1/4" x 1.25" hex head bolts
(3) - 1/4" extra thick washers

Tip: We suggest installing a bolt on each end and one in the middle. If it is difficult to get them to align just pick 3 holes that the bolts go into easily. There is a good amount of adjustability built into the space frame therefore perfect alignment is not critical but, the more precise you can be the better. Use anti-seize or brake caliper grease on bolts to make assembly easier.



- Using the space frame as a guide mark the location of the two holes that will need to be drilled on the bottom side of the tub.

Tools: Paint pen/marker

Tip: Mark the oval and once the space frame is removed you can use a center punch to mark the middle of the slotted area.

- Remove the space frame from the Jeep.

- Center punch the middle of the holes that you marked in step 7 and drill to a 5/8" opening.

Tools: Hammer, center punch, drill, 1/4" drill bit, 3/8" drill bit, 5/8" drill bit

Tip: Make a pilot hole using the 1/4" drill bit, enlarge the hole to 3/8", then enlarge them to their final dimension of 5/8".

- De-burr the two holes.

Tools: Drill, countersink or file

Tip: Due to the dimension of these holes a file will work for removing any sheet metal burrs left over from the drilling process.

- Install two (2) 3/8" extruded clip nuts into the holes that were just drilled.

HDW: (2) - 3/8" extruded clip nuts



Install Procedure:

Continued

- 10.** 2007-early 2012 Jeeps loosely install the 3/8" bolts with split washers and flat washer through the space frame into the 3/8" extruded clip nuts. Mid 2012 and newer Jeeps will need to use two (2) 3/8" bolts and two factory 8mmx 1.25 bolts for the threads molded into the tub.

HDW: (4) - 3/8" x 1.50" hex head bolts
(4) - 3/8" lock washers
(4) - 3/8" USS flat washers
Or
(2) - 3/8" x 1.50 hex head bolts
(2) - 3/8" lock washers
(2) - 3/8" USS flat washers
(2) - 8mmx1.25 factory bolts

Tip: Keep hardware loose to allow for adjustment when installing the 1/4" bolts. Use anti-seize or brake caliper grease on bolts to make assembly easier.



- 11.** With the space frame held in place by the bolts under the tub, begin to install the 1/4" bolts into the angled portion of the tub. **Do not tighten the bolts.**

Tools: 3/8" ratchet
3/8" drive 7/16" socket

HDW: (8) - 1/4" x 1.5" hex head bolts
(8) - 1/4" lock washers
(8) - 1/4" extra thick washers

Tip: Take your time with this step. If you cross thread a bolt it could cause a nut insert to spin causing significant difficulties. If a bolt does not feel like it is starting correctly move onto another hole. Sometimes it helps to push the space frame into the tub. If this does not work then evenly tighten the bolts that did go in while stopping occasionally to test to see if another one of the holes lined up. If the bolts will still not go in you can use a 1/4" - 20 tap to chase the threads and remove any material that may be blocking the bolt from threading correctly. Once again proceed with caution as it is rather easy to spin a nut insert or break a tap.

SEE TROUBLESHOOTING SECTION FOR MORE INFORMATION.



Install Procedure: Continued

- 12.** With all the 3/8" and 1/4" hardware started install the rubber door strip in between the tub armor and the space frame.

HDW: 68" - rubber door stripping

Tip: Make sure the bead of the stripping is facing up and is resting on top of the space frame.



- 13.** With the rubber door strip in place snug the 1/4" hardware.

Tools: 3/8" ratchet, 3/8" drive 7/16" socket

Tip: Start with rear of the space frame and work your way forward making sure the stripping is staying in position.

- 14.** Tighten all of the 1/4" hardware to **5-8 ft./lbs.** of torque.

Tools: 3/8" ratchet, 3/8" drive 7/16" socket

Tip: Again start at the rear of the space frame and work your way forward.

Note: To avoid damaging the nut inserts only tighten to **5-8 ft./lbs.** of torque.

- 15.** Tighten the 3/8" and or factory hardware located under the tub.

Tools: 3/8" ratchet
3/8" drive 9/16" socket
3/8" drive 13mm socket

Note: Tighten 3/8" hardware to **25 ft./lbs.** and factory hardware to **10 ft./lbs.**

- 16.** Install 3/8" extruded clip nuts into the space frame. Make sure the threaded portion of the clip nut points toward the inside of the space frame.

HDW: (10) (2 door) or (12) (4 door) - 3/8" extruded clip nuts



Install Procedure: Continued

- 17.** Remove the factory body bolts two (2) for a 2 door and three (3) for a 4 door.

Tools: 3/8" ratchet, 3/8" drive 18mm socket

Tip: The factory uses a retainer to hold the body bolts in place. Therefore, you may need to pull down on the bolts as you un-thread them.

Note: **DO NOT** just yank the bolts out as you may damage the retainer, which will make it difficult to install the new hardware. If you damage this retainer it can be removed by loosening all of the body mount bolts slightly lifting the body off of the frame with a jack and remove the retainer from between the top of the frame and the body tub.

- 18.** Place the outer wrap over the space frame, and use two (2) or three (3) 3/8" flat head bolts to hold it in place.

HDW: (3) - 3/8" SS flat head bolts

Tip: Leave bolts loose. Use anti-seize or brake caliper grease on bolts to make assembly easier.

- 19.** Install the new body bolts (3) . If you do not have a body lift install the aluminum spacers between the outer wrap and the body bushings. If your Jeep has a 1" body lift **DO NOT** install the provided spacers.

HDW: (3) - 12mm x 1.75 140mm GR10.9 hex head bolts
(3) - 12mm x 1.75 extra thick washers
(3) - 12mm x 1.75 lock washers high alloy
(3) - 1" aluminum spacers

Tip: Do not tighten the bolts at this time. Use anti-seize or brake caliper grease on bolts to make assembly easier.



- 20.** Loosely install the remaining 3/8" flat head bolts.

Tip: Use anti-seize or brake caliper grease on bolts to make assembly easier.

- 21.** While providing inward pressure on the outer wrap snug the 3/8" flat head bolts.

Tools: 7/32" hex key

Tip: Move from the rear of the outer wrap to the front. It is helpful to have another person providing pressure while you are tightening the bolts. The goal is to ensure there is even pressure on the rubber striping that was installed earlier. This will prevent debris from building up between the tub armor and the outer wrap.

- 22.** Tighten the 3/8" flat head bolts to **12-15 ft./lbs.** of torque.

Tools: 7/32" hex key

Tip: If you do not have a torque wrench, simply hand tighten them to the point where they will not come loose driving down the road. Do not over tighten.

- 23.** Tighten the body bolts to **50 ft./lbs.**

Tools: 3/8" ratchet, 3/8" drive 19mm socket

- 24.** Repeat procedure on the opposite side.

- 25.** Reconnect battery cables.